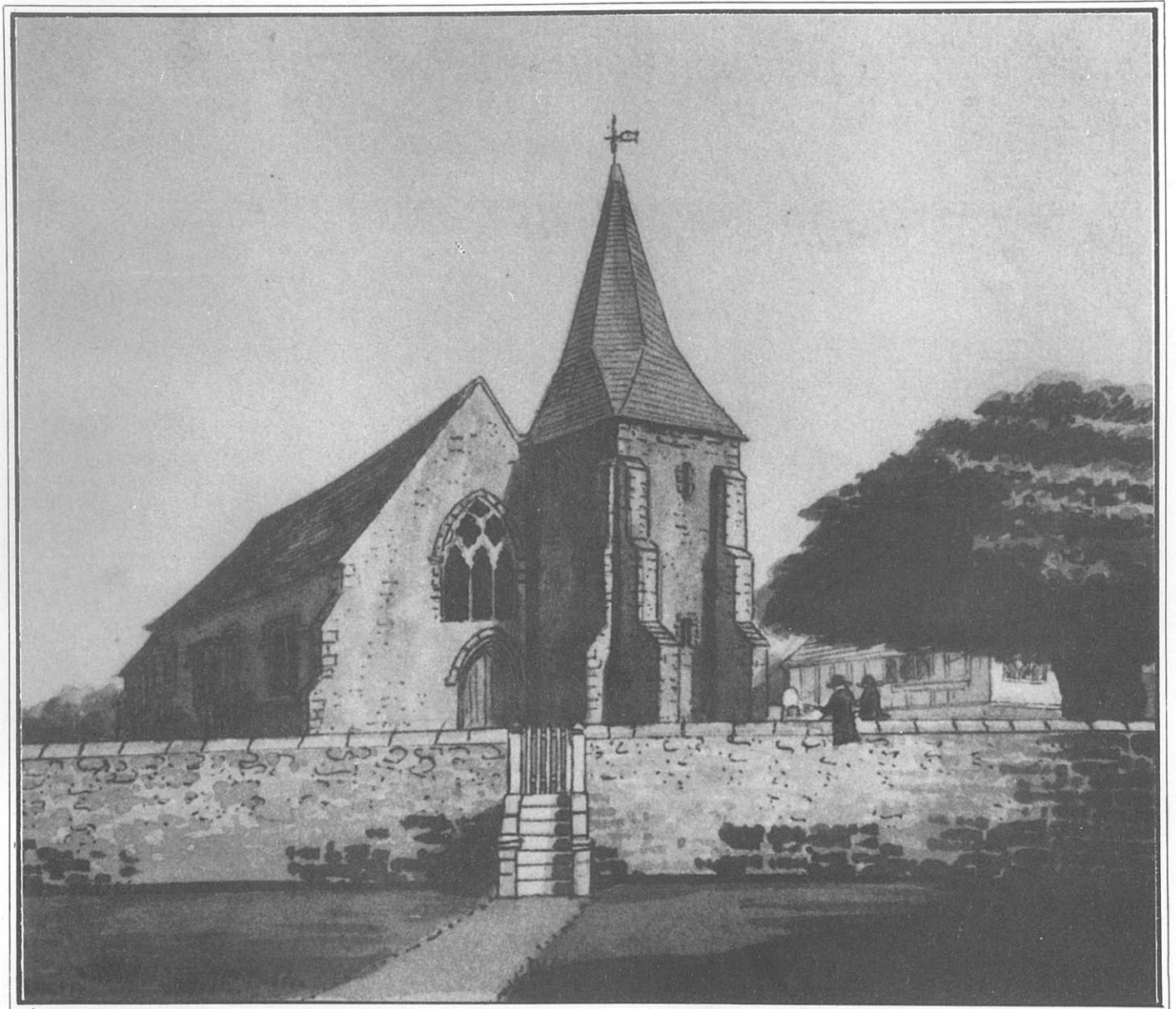


# Loose Threads

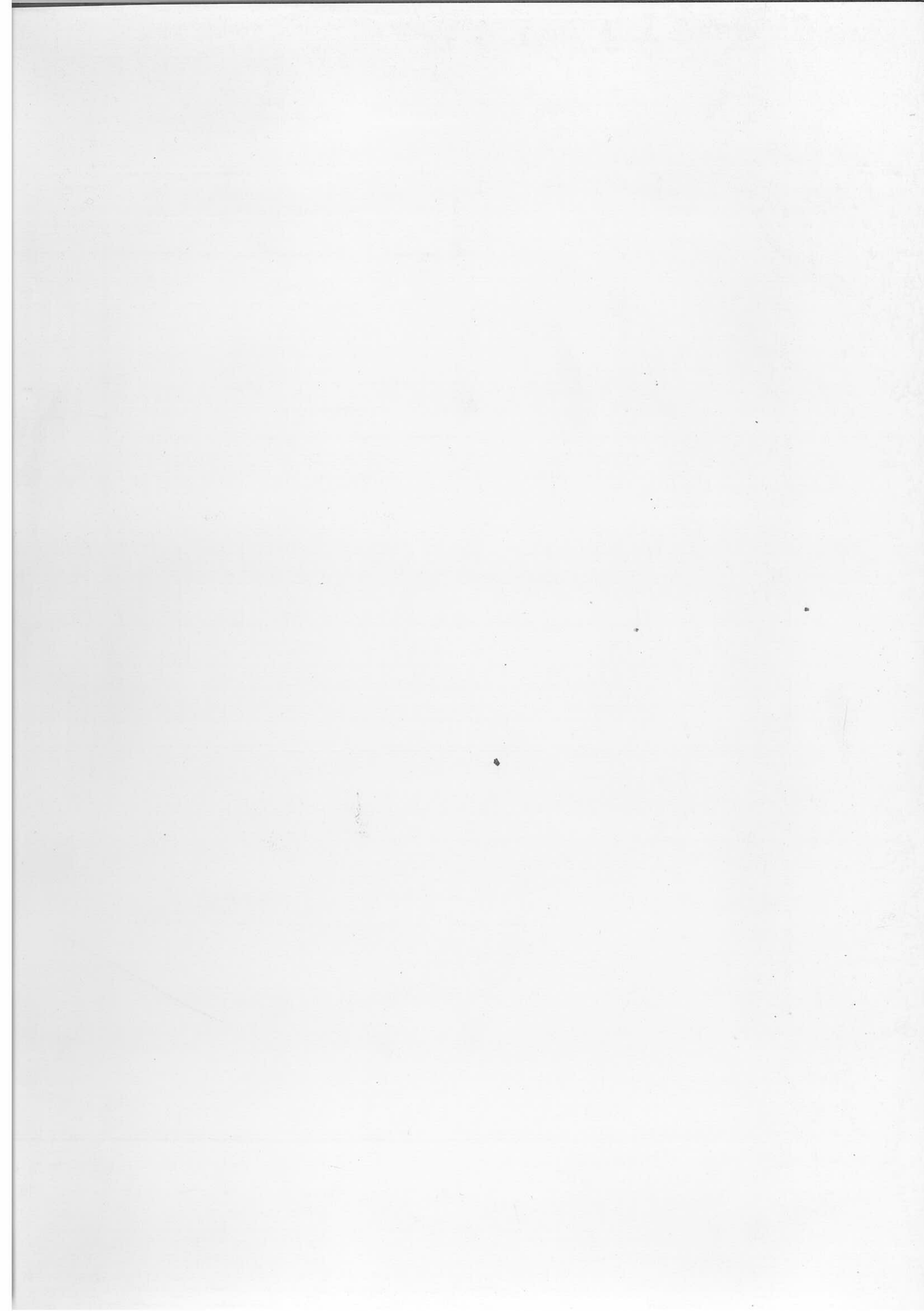
Journal of the Loose Area History Society



**No.3**

**£1.50**

**1991**



MALCOLM MOGG  
439 LOOSE ROAD, MAIDSTONE  
TEL. (0622) 743253

\*\*\*\*\*

WE CAN FEED YOU WITH OUR TOP QUALITY  
ENGLISH BEEF, PORK AND LAMB.

\*\*\*\*\*

BACON CUT AS REQUESTED.

\*\*\*\*\*

LOCAL HONEY.

\*\*\*\*\*

FRESH COFFEE BEANS

GROUND FOR YOU.

\*\*\*\*\*

OUR SPECIAL

TEA.

WE CAN ENTERTAIN YOU

WITH OUR WELL-STOCKED

VIDEO LIBRARY .... OVER

750 TITLES TO CHOOSE FROM.

\*\*\*\*\*

FREE MEMBERSHIP.

\*\*\*\*\*

FILMS FROM 50p PER NIGHT.

NEW RELEASES.

\*\*\*\*\*

FAMILY FILMS - CARTOONS.

VIDEO RECORDER HIRE.

\*\*\*\*\*

*TRY ONE OF OUR DAYS OUT.*

*TRAVEL IN LUXURY COACHES.*

*WE CAN TAKE YOU TO HISTORIC CASTLES AND HOUSES,*

*PLACES OF INTEREST, OLD TOWNS AND GARDENS.*

*WE ALSO DO HORSE SHOWS AND LONDON THEATRES AND SHOWS.*

*WE ARE AGENTS FOR "BORO' LINE".*

\*\*\*\*\*

*SEE YOU SOON!*

---

**CONTENTS**

Editorial and Contributors		2
One Day in 1327	Pat Jenner	3
Miscellanea 1	Pat Jenner	5
Bagent's Cottages	Brenda Cording	6
John Taylor, Freemason	Anne Creasey	8
Salts Place: some voices from the past	Julia Page	9
Miscellanea 2	Pat Jenner	14
The Reverend Denny Martin: a Loose connection with the Isle of Wight	John Watson	15
The Train Now Passing	Clive Cheeseman	18
George Marsham (1849-1927)	Helen Gallavin	24
Pear Tree Cottage: some documentary evidence	Margaret Chapman & Dot Froud	27
Lost Weight?	Margaret Chapman & Dot Froud	32
An interview with J.B. Green (1885-1982)	Roger Thornburgh	33
Notes and Queries		40
Loose Area History Society		40

Front cover: 'Loose Church, Kent', watercolour by Thomas Fisher, c1794, the earliest known picture of the parish church. (Reproduced courtesy of Kent Archaeological Society).

Back cover : The Loose Valley as shown on the six-inch to the mile O.S. map of 1909.

---

Contributors retain copyright of their material.

---

ISSN 0953-6809

Written by the Research Group of the Loose Area History Society.

Designed and produced by Roger Thornburgh.

Printed by Corrocray 1.46 Medway Enterprise Centre, Enterprise Close, Medway City Estate, Strood.

Copies of *Loose Threads* are available, £1.50 each (plus 32p p&p), from: Miss Pat Jenner, 610 Loose Road, Loose. Tel. Maidstone 744874.

## EDITORIAL

We begin this issue in the rather misty Middle Ages with a look at goings-on in the parish church in 1327 - the subject of Pat Jenner's talk to the Society last year; and proceed with articles on *Bagent's Cottages* (now no longer standing), a local mason-cum-farmer who once lived in what is now the *Swan* pub, the physical and financial trials of early residents of *Salts Place*, a connection between Loose and a manor house on the Isle of Wight, the ill-fated schemes for a Loose Valley railway, the influential and generous patron of Loose - George Marsham, and *Pear Tree Cottage* (perhaps the oldest dwelling in the parish) and its occupants. Finally, we have an edited transcript of an interview made in 1975 with the *Hayle Mill* papermaker and Loose Swiss Scouts founder, John Barcham Green - the subject of another and more recent talk by Clive Bradburn.

Readers who choose to consult the references at the end of articles will note the regular appearance of the letters 'C.K.S.'. These stand for the 'Centre for Kentish Studies' which came into being at the beginning of this year - the result of a merger between the Local Studies Collection, which had been housed at Springfield, and the Kent Archives Office. So the old K.A.O. reference has become C.K.S., though all the existing reference letters and numbers that went with the K.A.O. prefix have remained unchanged.

Pat Jenner, Roger Thornburgh,  
Editorial Committee.

+++++

### CONTRIBUTORS AND THEIR INTERESTS

Margaret Chapman, 13 Northleigh Close, Loose,	Tel, 746630	'Pear Tree Cottage'
Clive Cheeseman, 9 Walnut Tree Avenue, Loose,	Tel, 744745	Transport
B. Dee Cording, 21 Northleigh Close, Loose,	Tel, 745990	Pickering Street
Anne Creasey, 'Salokin', Pickering Street, Loose,	Tel, 744837	Ragstone quarries/Village archives
Dot Froud, 2 Pear Tree Cottages, Pickering Street, Loose,	Tel, 744517	'Pear Tree Cottage'
Helen Gallavin, 647 Loose Road, Maidstone,	Tel, 745220	Shops/Dip Wells/Well Street
Pat Jenner, 610 Loose Road, Loose,	Tel, 744874	Early families/Church history/ 'Woodlawn'
Julia Page, 87 Sheppey Road, Maidstone,	Tel, 743225	Coxheath Camp/Village archives/ 'Salts Place'
Roger Thornburgh, 'Forge Cottage', 2 Linton Road, Loose,	Tel, 744401	Index of inhabitants/Gravestone record/House reconstitution/ Photograph collection/ Newspaper search
John Watson, 3 Rushmead Drive, Maidstone	Tel, 744360	Parish Church