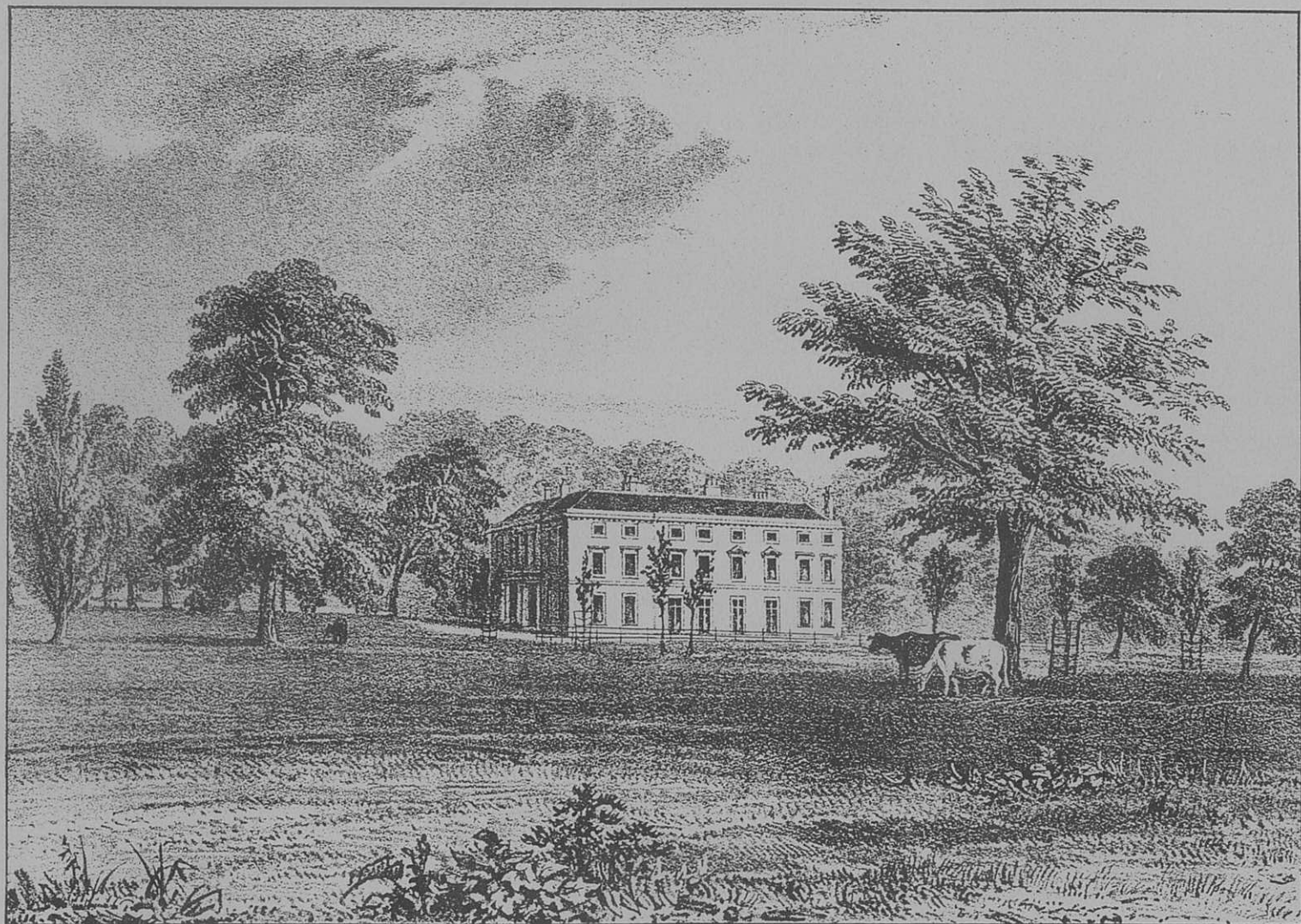


Loose Threads

Journal of the Loose Area History Society

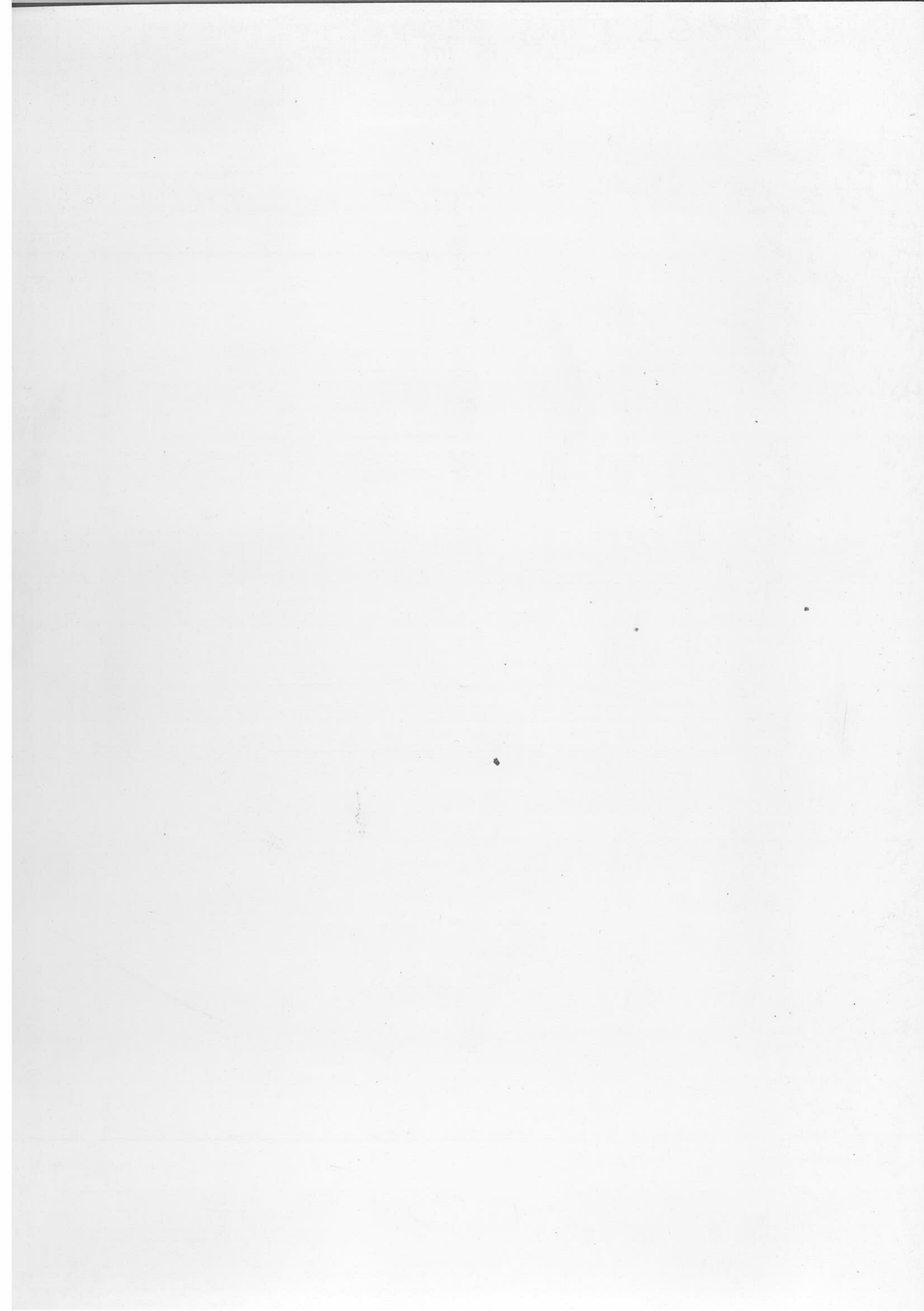


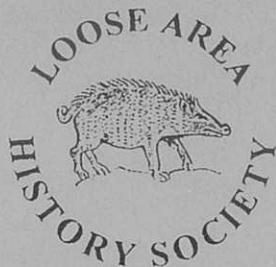
Drawn from Nature 16 on Stone by T. J. Rawlins

HAYLE PLACE

R. Martin Lithographer 26, Long Lane

Number 4





LOOSE AREA HISTORY SOCIETY

The Society was formed in 1989 with the following aim enshrined in its Constitution: 'to research and record the history of Loose and its neighbourhood, and pursue these ends by means of a research group, lectures, exhibitions, publications and other events of a supportive nature'. The Constitution also states that 'the Society shall continue to collect evidence of Loose and its neighbourhood's history, and work towards acquiring a central repository at some future date'. The repository is still some way off, but the archive collection is growing steadily and is available for members of the Society and others to examine on application to the Archivist.

General meetings are held monthly, usually in the Loose Infants' School. The Research Group meets less frequently to discuss members' work, publications, the planning of exhibitions etc. For details of membership of the Society and its activities, please contact the Secretary, whose address and telephone number is opposite.

The name 'Loose' is usually taken as being derived from the Old English 'Hlose', meaning 'place of pigs', and the above logo showing a medieval pig has therefore been adopted by the Society.



Scriba House, Loose Road, Maidstone ME15 0AA
A229 next to Kings Arms.
Telephone & Fax: 0622 746037

JOAN JONES (Furnishings)
~ for a friendly personal service ~

Mahogany, Yew & Pine.
French Lamps, Occasional Chairs,
Objets d'art.

Have **you** thought of joining?

THE FRIENDS OF MAIDSTONE MUSEUMS AND ART GALLERY

Talks on a Variety of Subjects by Experts
Visits to Places of Interest, and you can lend a hand
in the museums themselves

Annual Fee: Single £7.50; Couple £12
For details, phone Maidstone (01622) 743717

Museum & Art Gallery, Faith Street - Tyrwhitt-Drake Museum of Carriages

MALCOLM MOGG TRAVEL

439 Loose Road, Maidstone. Tel. 01622 743253

January : Pantomime
February : Holiday-on-Ice
March : London Shows
April : Spring Tours
May : Windsor Horse Show
June : Isle of Wight

July : Hampton Court Flower Show
Royal Tournament
August : Stately Homes
September : Scenic Tour
October : Autumn Tour
November : Winter Wonderland
December : London Lights

Many more tours available - to France and the UK.

CONTENTS

Editorial and Contributors		2
The inhabitants of Hayle Place	<i>Sheila Wilson</i>	3
Just passing through: Thomas Foster (1820-1891)	<i>Paul Newton Taylor</i>	6
School days at Loose, 1939-1945	<i>Helen Gallavin</i>	9
Fun and Games in Coxheath Camp, 1804	<i>Julia Page</i>	11
Peale House	<i>Anne Creasey</i>	16
All aboard: the origins of some Maidstone area bus services	<i>Clive Cheeseman</i>	19
The Parish boundary	<i>Roger Thornburgh</i>	23
Of Anchorites and Hermits	<i>Pat Jenner</i>	28
The Tanyards of Loose	<i>Frank Allchurch</i>	30
Pear Tree Farm: memories of Charles and Betty Newman	<i>Dot and Robin Froud</i>	34
Tailpiece	<i>Pat Jenner</i>	40

Front cover: 'Hayle Place', a print from C. Greenwood's *An Epitome of County History, 1: County of Kent*, published in 1838.

Back cover: The Loose Valley as shown on the six-inch to the mile O.S. map revised in 1933 and 1937 with additions in 1948; published 1950.

ISSN 0953-6809

Written by the members of the Research Group of the Loose Area History Society and others. Contributors retain copyright of their material.

Designed and produced by Roger Thornburgh.

Printed by Corrocroy Ltd, The Whitewall Centre, Whitewall Road, Strood.

Published by the Loose Area History Society, 1995.

Copies of this edition of *Loose Threads* may be obtained from:

The Secretary,
Loose Area History Society,
16 Bedgebury Close,
Maidstone, Kent ME14 5QY.
Tel. 01622 677970.

There are still some copies of *Loose Threads* No.3 available. Numbers 1 and 2 are now out of print.
